

A photograph of an industrial facility, likely a refinery or power plant, at sunset. The sky is a mix of orange, pink, and blue. The facility features several tall distillation columns and complex piping, all illuminated with yellow lights. The lights and the structure of the plant are reflected in a body of water in the foreground.

# *Guardfire*

## **COMPANY BROCHURE**

Fire Protection for the oil, gas, petrochemical and power generation industries

# **Guardfire** is a specialist fire protection company.

Guardfire was established in 1990 to provide fire protection systems and equipment for the power generation, petrochemical, and oil & gas industries.

We provide a full range of services including design, supply, supervision, installation, commissioning, spare parts, and after sales services.

Recognized as a market leader in the field of fire protection, Guardfire has its operational headquarters in Thailand and a branch office in Singapore.

Guardfire is a subsidiary of Takachiho Koheki, a company listed on the Tokyo Stock Exchange which provides system integration packages for security, etc.

## **Managing Director's Message**



**Mark G. Davies**  
Managing Director

From small beginnings in Thailand over 25 years ago, we have grown to become one of the leading fire protection companies operating within our industry. We are particularly strong in South East Asia but we also have a broad reference list of projects in the Middle East, Africa and South America.

Our client base is predominantly the major EPC companies that are headquartered in Japan, Korea, USA and Europe, this is a small client base and so it is particularly important that we maintain our reputation for top quality equipment and services at internationally competitive prices.

We are still in business thanks to the continuing support of our EPC clients and the repeat business that we receive. We assure you of our ongoing commitment to providing top quality fire protection solutions at competitive prices.



**Guardfire Head Office**  
(Guardfire Limited)



**Guardfire Branch Office**  
(Guardfire Singapore Pte Ltd)



## Core Business

|                               |   |
|-------------------------------|---|
| <b>Category</b>               | Fire protection systems and equipment   |
| <b>Industry</b>               | Power generation, petrochemical, and oil & gas                                      |
| <b>Market Territory</b>       | Global, with specific focus on South East Asia                                      |
| <b>Scope</b>                  | Design, supply, supervision, installation, commissioning, spare parts, and services |
| <b>Systems &amp; Products</b> | Sourced from leading brands in the fire industry                                    |
| <b>Design Code</b>            | NFPA, classification societies' rules and local codes where applicable              |
| <b>Product Approval</b>       | UL/FM and other approvals where applicable  |



## Systems & Products

Guardfire product range covers all aspects of fire protection and detection equipment.

### Fire Detection & Alarm Systems

Control panels, smoke, heat, flame and gas detectors, manual stations, alarm devices, etc.



### Foam-Water Systems

Tanks, foam, inductors, nozzles, packaged skids, fire pumps, etc.



### Water Systems

Deluge valves, alarm valves, isolation valves, sprinklers, spray nozzles, packaged skids, fire pumps, etc.



### Gas Suppression Systems

FM-200, Inergen, CO2, NOVEC, packaged skids.



### Fire Fighting Equipment & Valves

Fire extinguishers, fire hoses, nozzles, hose cabinets, monitors, isolation valves, etc.



### Dry Chemical Systems

Tanks, nozzles, monitors, twin agent (foam/powder), packaged skids.



## Designs in compliance with international codes.

Our design team has over 25 years of experience protecting over 500 industrial facilities according to NFPA codes.

Design team is divided into specialist sections which each focus on specific systems such as Fire Detection and Alarm Systems, Water and Foam Systems, and Gas Suppression Systems.

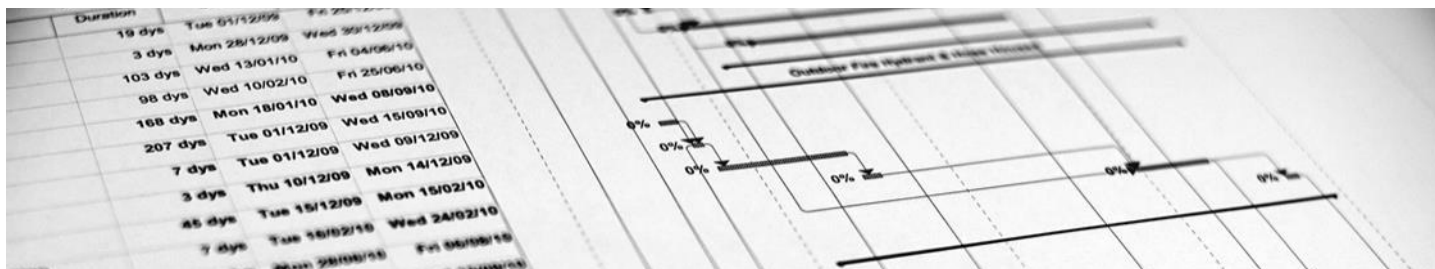
The team has access to the latest design tools including AutoCAD Plant and PipeNET installed on modern hardware. Piping designs can be provided as a 3D model in AutoCAD Plant format if required.

Our engineers are regularly trained, internally by Guardfire, and also externally by third parties such as NFPA, product manufacturers, etc. We subscribe to relevant design codes such as NFPA to ensure that we comply with the latest version.



## Project Management to EPC client standards.

Our project managers are experienced in overseeing large industrial projects according to the stringent requirements of the power generation, petrochemical, and oil & gas industries. The project manager is the client's main point of contact for the duration of the project, from the initial kick-off meeting through to commissioning and handover stage.



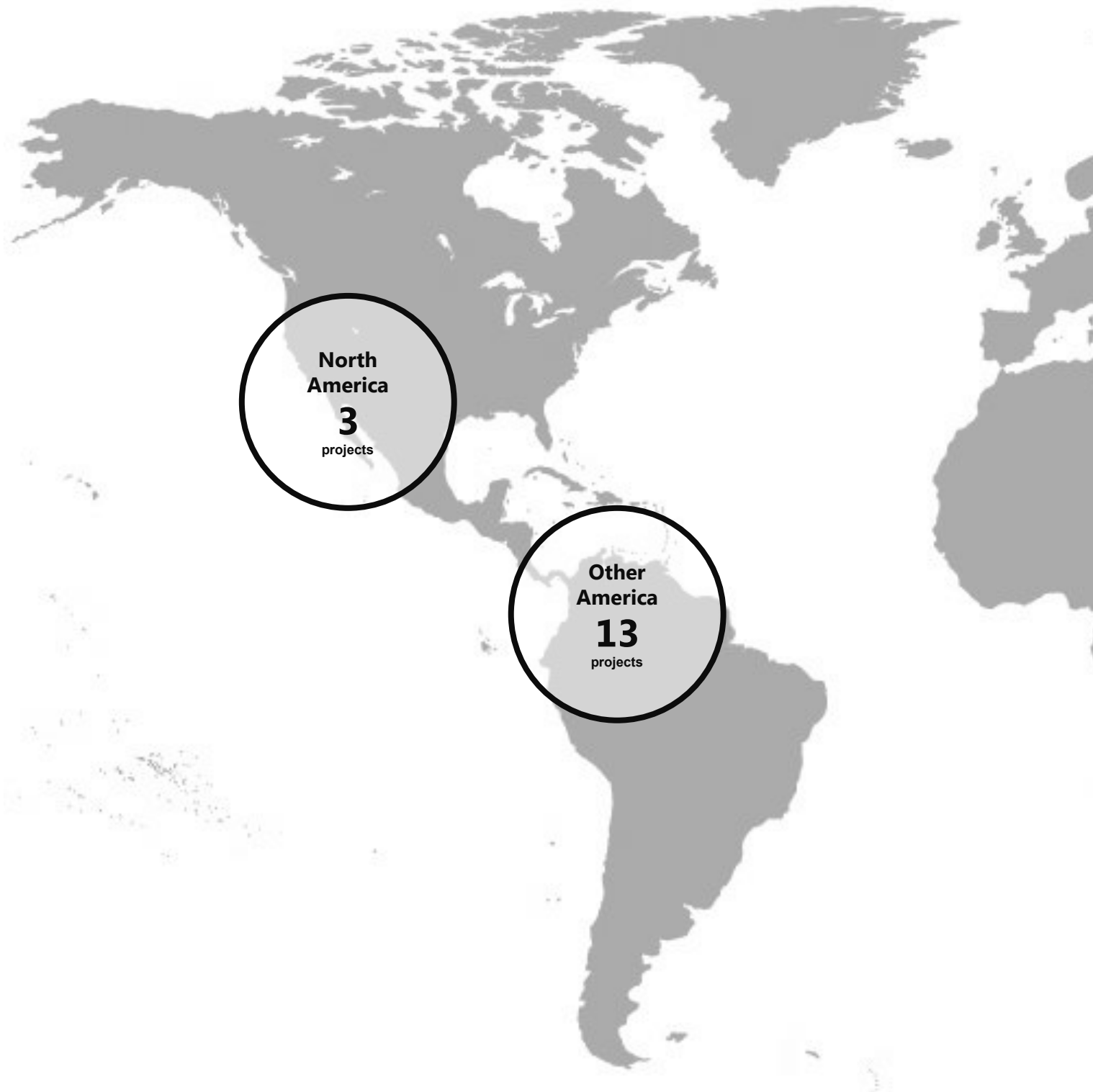
## Commissioning & Service using trained engineers.

We employ commissioning & service engineers who have many years of experience with our fire protection systems.



# Projects

Guardfire has an extensive track record in the Power Generation, Petrochemical and Oil & Gas industries. We have protected over 500 facilities



## South East Asia

Petrochemical: 228 projects  
Power: 63 projects  
Offshore: 51 projects  
Tank Terminal: 34 projects  
Industrial: 63 projects

## Middle East

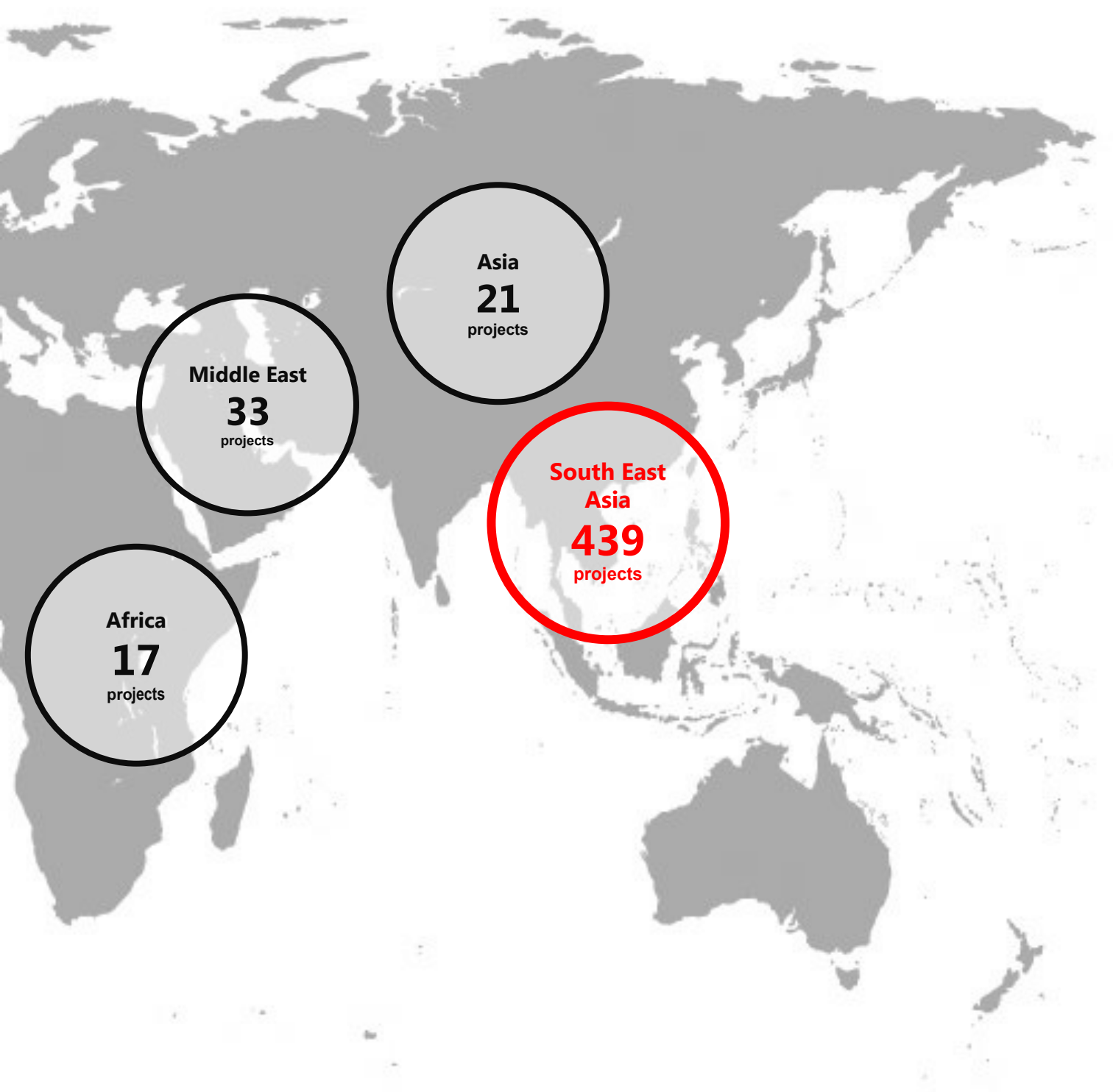
Petrochemical: 28 projects  
Offshore: 2 projects  
Tank Terminal: 1 project  
Industrial: 2 projects

## Asia

Petrochemical: 13 projects  
Power: 4 projects  
Offshore: 2 projects  
Tank Terminal: 1 project  
Industrial: 1 project



ies in 30 countries over 25 years.



#### **Africa**

Petrochemical: 4 projects  
Power: 6 projects  
Offshore: 7 projects

#### **America**

Petrochemical: 9 projects  
Power: 1 project  
Offshore: 6 projects

#### **Other**

Petrochemical: 2 projects  
Power: 1 project  
Offshore: 4 projects

## Partner Brands



**NOTE:** The brands here are representative sample of the products that we regularly supply. If you require any specific products which are not shown please contact us, we can supply most types of fire protection products.



# QHSE

## Quality

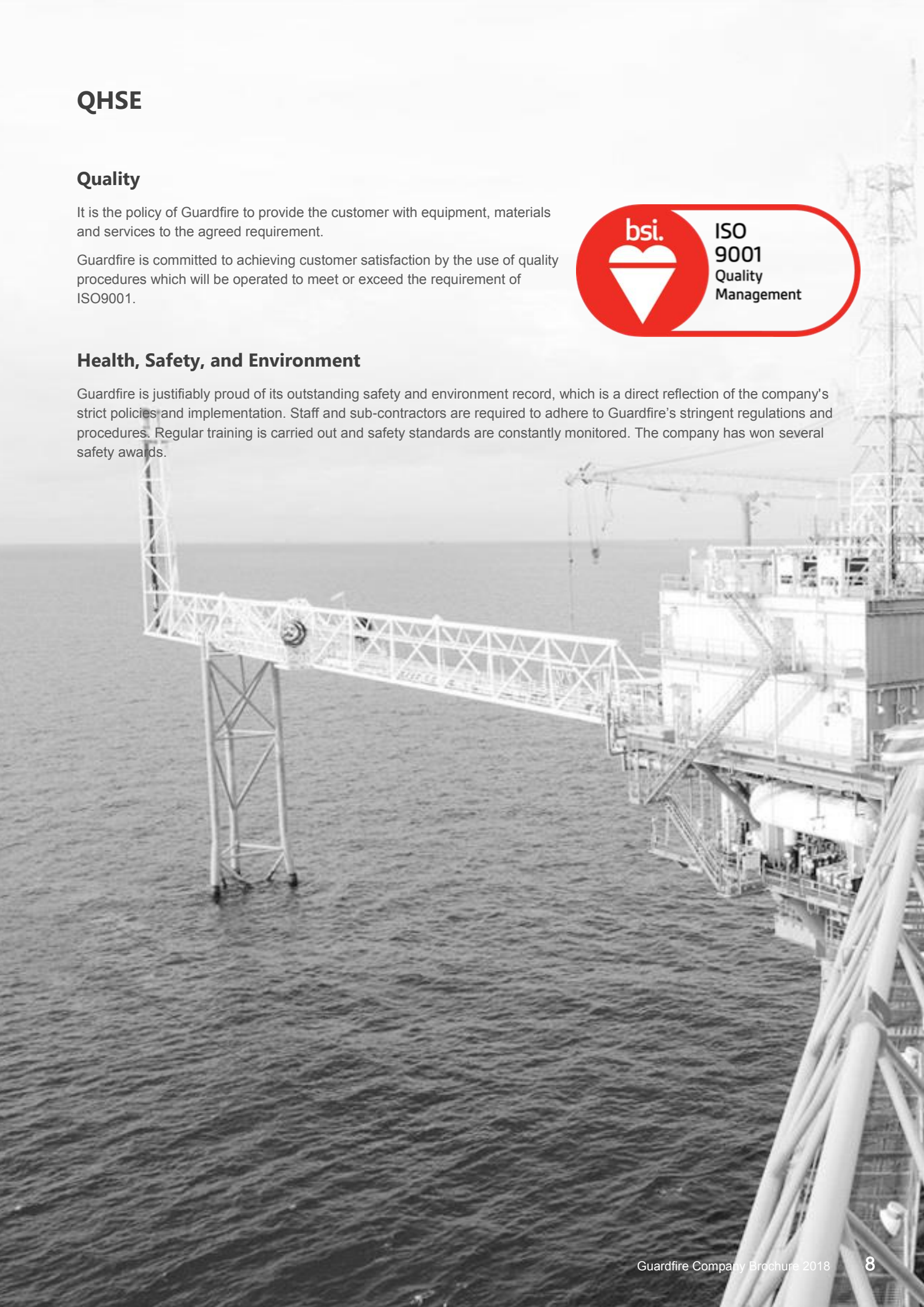
It is the policy of Guardfire to provide the customer with equipment, materials and services to the agreed requirement.

Guardfire is committed to achieving customer satisfaction by the use of quality procedures which will be operated to meet or exceed the requirement of ISO9001.



## Health, Safety, and Environment

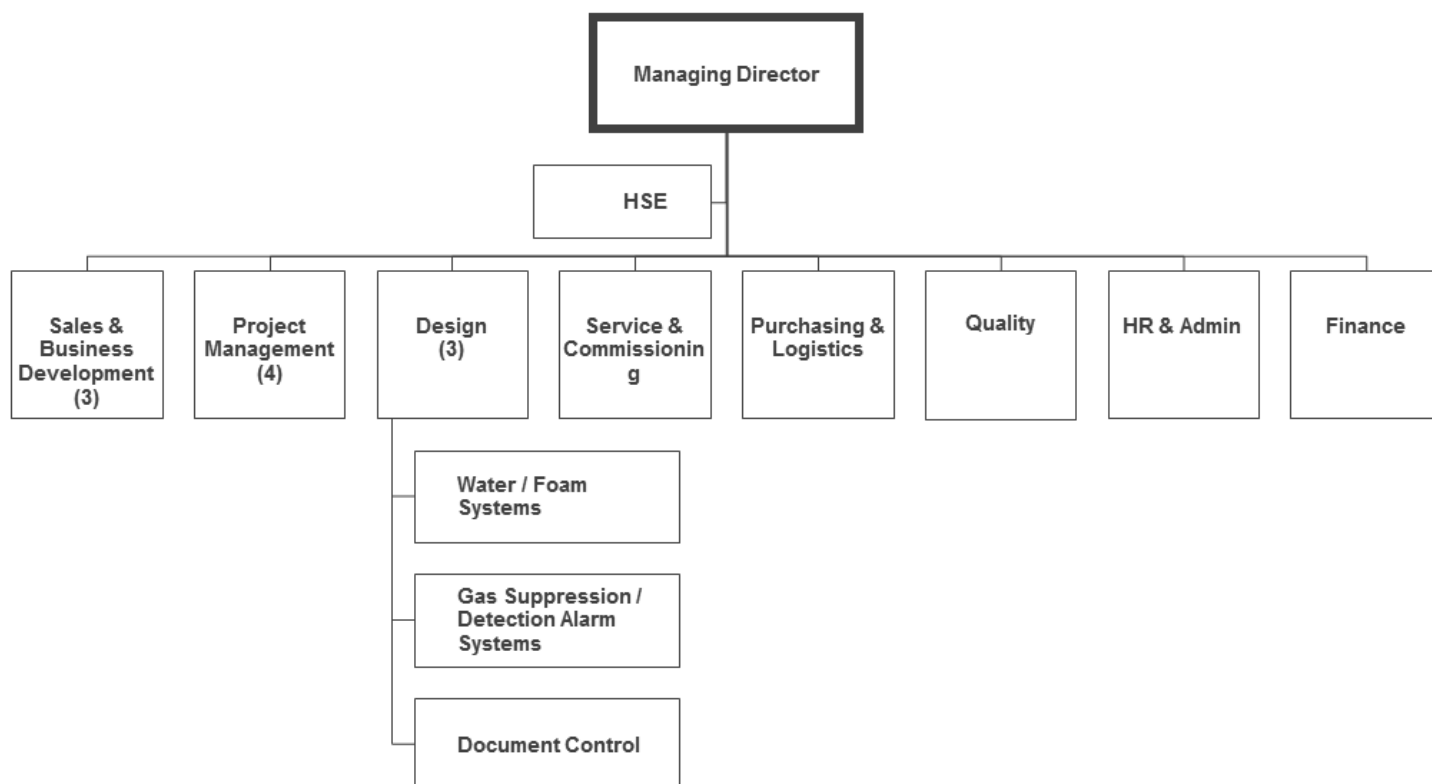
Guardfire is justifiably proud of its outstanding safety and environment record, which is a direct reflection of the company's strict policies and implementation. Staff and sub-contractors are required to adhere to Guardfire's stringent regulations and procedures. Regular training is carried out and safety standards are constantly monitored. The company has won several safety awards.



## Company Overview

|                               |  |
|-------------------------------|--|
| <b>Corporate Headquarters</b> | <b>Guardfire Limited</b><br>1780 Teo Hong Bangna Building, 8th Floor, Debaratna Road, Kwang South-Bangna, Ked Bangna Bangkok 10260, Thailand |
| <b>Establishment</b>          | 20 November 1990   |
| <b>Managing Director</b>      | Mark G. Davies   |
| <b>Paid-up Capital</b>        | THB 20,000,000.00  |
| <b>Parent Company</b>         | Takachiho Koheki Co., Ltd (Japan)  |
| <b>Number of Employees</b>    | Approximately 80   |
| <b>Phone</b>                  | +66 2 746 7030   |
| <b>E-mail</b>                 | info@guardfire.com   |

### Organization



## Guardfire Limited

### Access

#### By car

Approximately 30 minutes from downtown

#### By BTS (Sky Train Sukhumvit Line)

The nearest station is Udomsuk (E12),  
then approximately 10 minutes by taxi

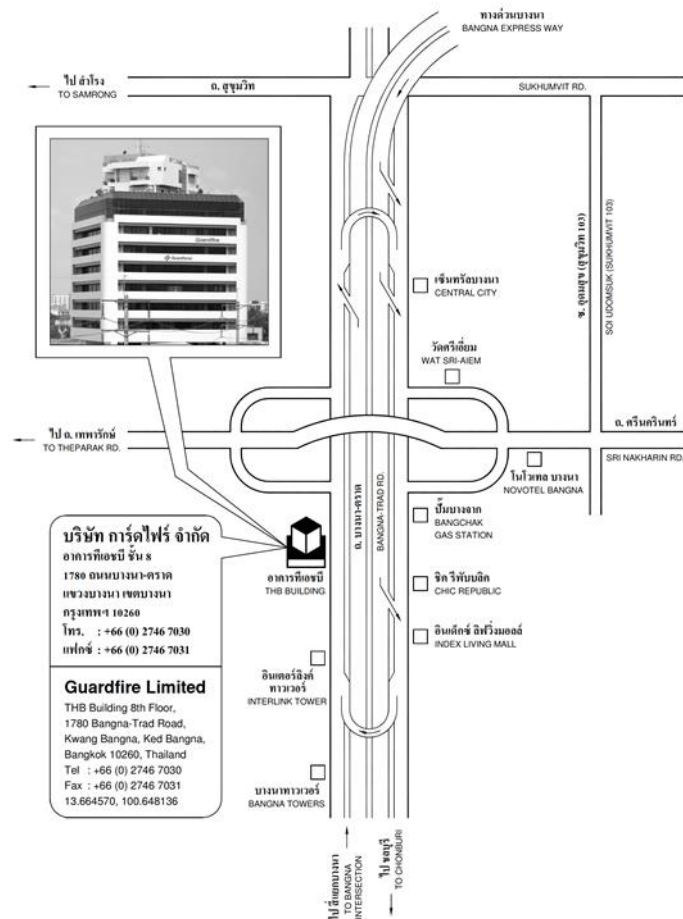
#### By Airplane

From Suvarnabhumi Airport

Approximately 30 minutes by taxi

From Don Mueang Airport

Approximately 50 minutes by taxi



## Guardfire Singapore Pte Ltd

### Access

#### By car

Approximately 15 minutes from downtown

The nearest express way exit is PIE No.9

#### By MRT (Circle Line)

The nearest station is MacPherson (CC10),  
then approximately 2 minutes by walking

#### By Airplane

From Changi Airport

Approximately 30 minutes by taxi

# ***Guardfire***

## **Guardfire Limited**

1780 Teo Hong Bangna Building, 8th Floor, Debaratna Road, Kwang South-Bangna, Ked Bangna, Bangkok 10260, Thailand  
Phone: +66 2 746 7030 | Fax: +66 2 746 7031-2 | [info@guardfire.com](mailto:info@guardfire.com)

## **Guardfire Singapore Pte Ltd**

140 Paya Lebar Road, AZ@PAYALEBAR, #09-07, Singapore 409015  
Phone: +65 6702 5340 | Fax: +65 6702 5346 | [infosp@guardfire.com](mailto:infosp@guardfire.com)

[www.guardfire.com](http://www.guardfire.com)